



HLSS separator for process streams

The solution for contamination problems in fuel for combustion engines.

The Hobré Instruments HLSS separator provides a maintenance free solution for highly diverse applications for removal of water, sediment and many other contaminants from process streams like fuel or other hydrocarbons. The separator removes the major part of contaminants, which results in considerable lower maintenance.

The separator works by using centrifugal force to separate the particles and water droplets from the hydrocarbon stream. The liquid enters the centre tube, which has a spiral mounted inside. The spiral causes the liquid to rotate when it enters the lower section of the separator. Due to the weight difference, the particles and water are removed by the slip stream and returned to process. The remainder of the sample goes to the top of the separator, where a further separation is done in the relative large volume. Water can be tapped off on the side of the separator. For a further removal of water, an additional coalescer or Teflon filter is recommended.

Different separator capacities are available for a broad range of commercial, industrial and consumer applications. Units are made from 316SS 4"ID pipe and can take up to 40 barg. Delta pressure across the separator is 60-400 mbarg at flows from 0-5 l/min. up to 0-90 l/min. Units remove free water from hydrocarbon streams having a minimum 0,1 specific gravity difference. Units also remove particulates, down to the 3-5 micron range.

The separator can be used to remove particles and water from fuel samples to process analysers. The filter can be used as fast-loop filter with a continuous fast-loop flow to the standard drain connection. It is also possible to install a manual or automatic drain valve. As an option a conductivity sensor can control an automatic drain valve.




AVAILABLE SIZES:
Model HLSS-2

Dimensions : A= 330 mm, B= Ø 117,5 mm
 Inlet & Outlet port : 1/2" FNPT
 Top & Drain port : 1/2" FNPT
 Max. working pressure : 40 barg
 Flow rate : 0 – 5,5 l/min
 All materials : 316 L Stainless steel

Model HLSS-4

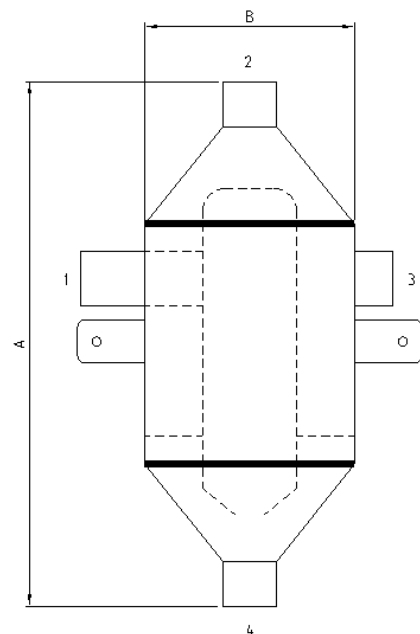
Dimensions : A= 406 mm, B= Ø 117,5 mm
 Inlet & Outlet port : 1/2" FNPT
 Top & Drain port : 1/2" FNPT
 Max. working pressure : 40 barg
 Flow rate : 0-13 l/min
 All materials : 316 L Stainless steel

Model HLSS-8

Dimensions : A= 546 mm, B= Ø 117,5 mm
 Inlet & Outlet port : 3/4" FNPT
 Top & Drain port : 3/4" FNPT
 Max. working pressure : 40 barg
 Flow rate : 0 – 24 l/min
 All materials : 316 L Stainless steel

Model HLSS-24

Dimensions : A= 546 mm, B= Ø 203 mm
 Inlet & Outlet port : 1" FNPT
 Top & Drain port : 1" FNPT
 Max. working pressure : 40 barg
 Flow rate : 0 – 90 l/min
 All materials : 316 L Stainless steel

HLSS- FILTER SEPARATOR

HLSS-2/4/8/28

- 1 = SAMPLE INLET
- 2 = VENT CONNECTION
- 3 = SAMPLE OUTLET
- 4 = FASTLOOP OUTLET OR DRAIN CONNECTION

FOR DIMENSIONS SEE HLSS SEPARATOR SPEC

All units are shipped without fittings, ball or gate valves, plugs, etc.

Revision nov 2008

